



H2O CONCEPTS L.L.C

Dubai

Sheikh Zayed Road
P.O. Box 37843
Tel. +971.4.339.7099
Fax +971.4.330.7088

Abu Dhabi

Airport Road
P.O. Box 39114
Tel. +971.2.445.8788
Fax +971.2.446.2874

Oman

Shatti Al Qurum, Muttrah
P.O. Box 1066
Tel. +968.2.200.5340
Fax +968.2.200.5341

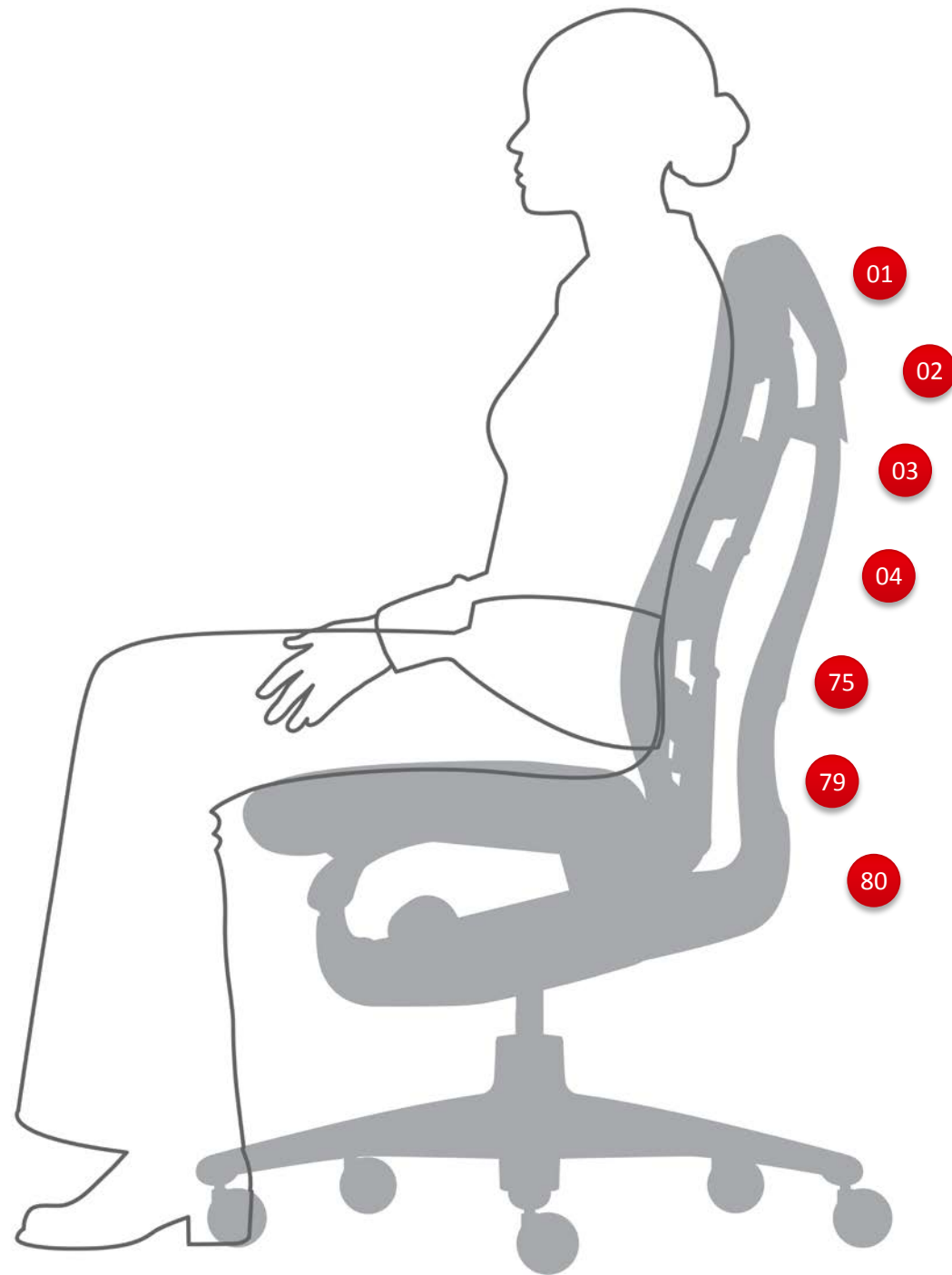
Iraq

Al-Atafiya - Al Damerji
Street
Mob. +964.782.322.1878
Mob. +964.771.907.0029

www.h2oconcepts.ae
www.shop.h2oconcepts.ae



CONTENTS



Preface

Message from the GM

Products :

Furniture

Carpet


Brands & Accreditation

Project References



PREFACE

H2O CONCEPTS was first established in 2004 and continues to be one of Herman Miller's largest and most successful dealerships within the UAE and Oman. To sustain our success and competitiveness within the market place, we understood the need to partner with a variety of additional brands that further support and compliment our product portfolio, making H2O CONCEPTS a reputable solution provider within the interiors industry.



Delivering dynamic and versatile contract furniture solutions is the hallmark of H2O Concepts. We are proud to offer a range of services to our clients which include, but are not limited to; Creative Design Solutions; Space Planning and Development; Project Management and Installation; Post Order Consultation and Day Two Account Management.

We are committed to building and sustaining long term relationships with our client base. Our primary aim is to build upon our success year upon year, working together with clients who can recognise the value in high performance working environments.

Message from the GM

H2O Concepts is an organization that continues to be unique among players in our market sector, with a high-end portfolio of clientele, an experienced and confident team, and dynamic infrastructure.

Our team is constantly evolving, crossing barriers set by a slow market trend, we go the extra mile to be an active part of a more promising recovering environment.

Our Business plan is demanding but achievable. The most important driver to achieve H2O Concepts' aspirations is the talented people that we are proud to have.

Encouraging interaction among team members contributes to exceeding our clients' requirements.

“Encouraging interaction among team members contributes to exceeding our clients' requirements.”





Herman Miller Inc. is a globally recognized innovator in contemporary interiors and related technologies for office, home, and higher education settings. Our reputation for integrity in product quality and business relationships has developed through partnerships with some of the century's most outstanding designers.



LAYOUT STUDIO & MIRRA 2
Workstations and task chairs





CANVAS OFFICE LANDSCAPE and AERON
Workstation and task chairs



LAYOUT SUITES, EMBODY and SWOOP
Private office, task chair and plywood lounge chairs & coffee table



STEM, LAYOUT STUDIO and SAYL
Storage system, desks & task chairs



CAPER
Multi-use chairs

EMBODY
Task chair



AERON
Task chair in mesh seat and back



SETU
Multi-use chairs available in upholstered and in mesh seat and back



MIRRA 2
Task chair with semi-polished base



SAYL
Task chair in fabric seat and graphite base



SENSE and SETU
Workstation and multi-use chairs



EVERYWHERE
Tables



GOETZ
3-seater sofa



SWOOP
Lounge furniture



Thrive Ergonomic Portfolio



FLO
Monitor arms



LAPJACK
Laptop stand

Our Thrive portfolio is the latest step in our journey to help employees feel supported and comfortable – to Thrive at work – and as pioneers in workspace ergonomics we will continue to design furnishings and fittings that will help our clients help their people feel better and work better.



BRANCA
Wood finish armchairs



ENVELOP and EMBODY
Desk and task chair



SHE SAID
Armchair with seat and back cushion pad

SHE SAID
Multi-use armchair



HE SAID
Multi-use armchair



MEDICI
Wooden lounge chair



BRANCA
Multi-use armchair



Geiger designs and manufactures furniture that helps modern professionals do their work exceedingly well, celebrates their individual relevance to the enterprise, and betters the work environment around them. In 1999, Geiger joined the Herman Miller family, strengthening Herman Miller's ability to create great places to work.

SOTTO
Executive chair



CLAMSHELL
Executive and meeting chair



TUXEDO
Modular sofa



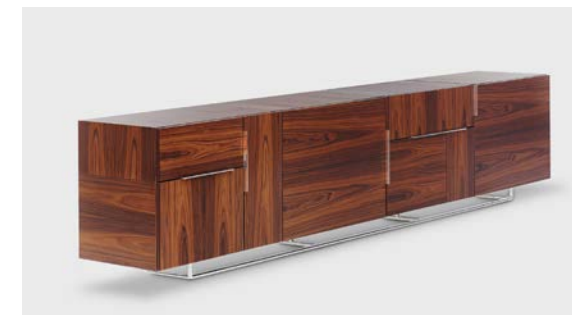
SLED
Lounge chair



CAUCUS
Conference suite



SCISSOR
Lounge chair



DOMINO
Low-height storage



NUCRAFT

Nucraft Furniture provides finely crafted wood furniture that enhances the aesthetic and function of private offices, conference rooms and open areas. Our ability to provide custom solutions allows designers to realize their vision and support the unique needs of their clients. Visit the Nucraft website to experience the beautiful and innovative products that we deliver.



FLOW
Meeting table with panel base



EQUATE
U-shape executive desk with wall unit



ENVISION
Segmented front panel reception desk



TAVOLA
Conference table



CAVARA
Free-standing desk with back credenza and upper cabinet



MERINO COLLECTION
Free-standing desk with back credenza and storage units

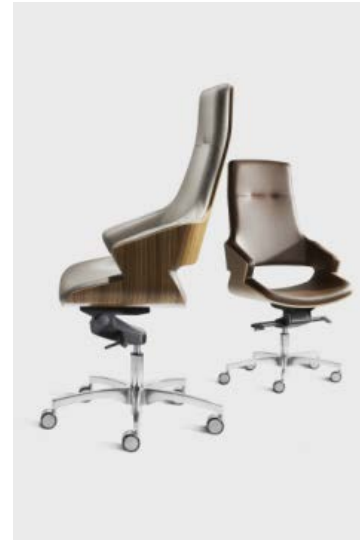
Connection have been designing and manufacturing contemporary commercial furniture since 1995.

Our business has been built on an ethos of passion and care for the quality of our products, the service to our customers and the job satisfaction of our employees, many of whom have been with us since the company started.



CALLITA
Sculptural form chair

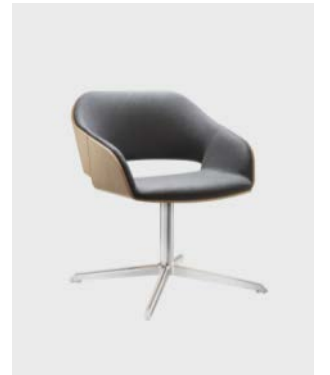
STANLEY
Executive chair with plywood shell



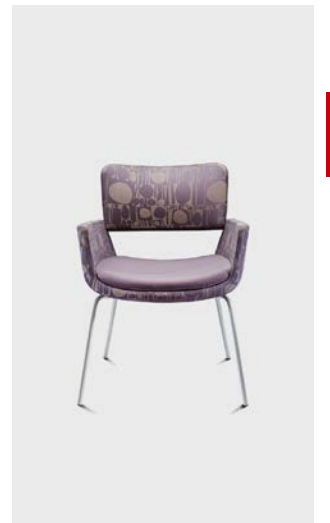
VENT
Bar stool with wooden shell



HALO
Lounge chair with wood shell



DIXI
Tub chair with fixed or swivel base



KORUS
Lounge chair



COURIER
Lounge chair



XPRESSO.THREE
Multi-use stackable chair



MOCHA
Multi-use chair



HORIZON
Modular seating



KALA
High back armchair



ORBIS
Lounge chair and 3-seater sofa



HIVE ONE
Modular seating

Every customer should take a stroll through the MOVING FACTORY, not only to satisfy the mere curiosity of seeing how the office chair is built, but also to experience the power conveyed by the company.

All products are 100% Made in Moving: the chairs are designed and realized completely in-house.

Moving represents a reality that is currently disappearing: The ability, the will and strength to create a completely Italian product, a guarantee of made in Italy quality and style.



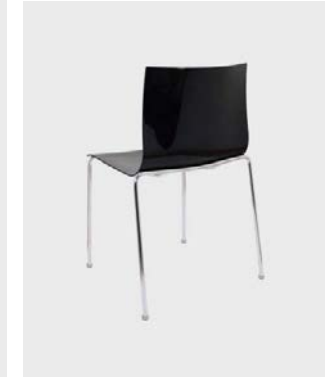
CARDINALE
High-back Chair



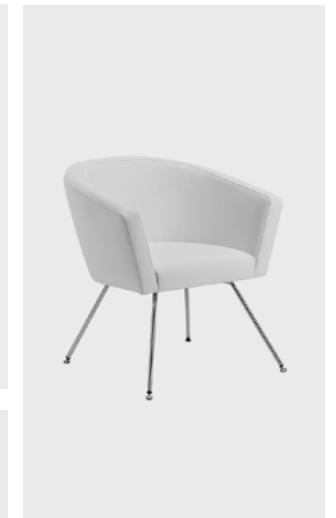
BOHEME
Multi-use chair



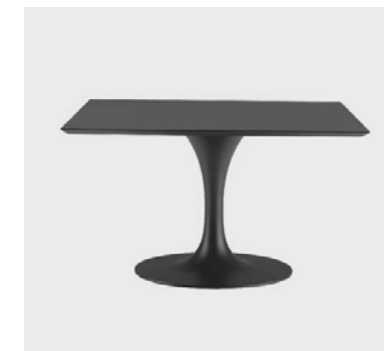
SLIM
Multi-use chair



ELETTRA
2-seater bench



CARMEN
Multi-use chair



EDGAR
Lacquered finished table



ALIA
High-back Managerial Chair



VIVA
High-back Managerial Chair



ECO
Mesh back Task Chair



GIADA
High-back Managerial Chair



ATTIVA
High-back Managerial Chair



DRESS
Low-back Managerial Chair



OTELLO and AIDA
Lacquered Table & wooden shell chair



OTELLO, EDGAR, AND NABUCCO
Lacquered tables



Wiesner-Hager is a high quality European furniture manufacturer from Austria.

The theme of office architecture has grown into one of enormous complexity. Psychological, sociological and ergonomic aspects have become the defining factors in a contemporary office.

We are setting off on a fact finding mission for what counts in modern office architecture today. We would like to share with you our philosophy and our expectations in partnership with H2O Concepts.



MACAO
Polypropylene seat shell barstool



S13
Stacking chair



PULSE and AYO
Modular meeting table and chair

MACAO
Height adjustable polyurethane seat stool



MACAO
Polyurethane shell chair



FIZZ
Upholstered padded seat barstool



GRACE
Square table



THEBA
Upholstered chair with wooden base



MACAO
Free-form shaped top bistro tables



UPDATE_B
Stackable Chair



PIXIE
Upholstered cube pouf



FLEX
Rectangular foldable table



POI
Office chair

FOREG shelving systems are known for their high quality and – consequently – long service life.

The sheer diversity offered by materials and colour nuances opens up new design opportunities for end panels, which can be supplied as metal, glass or wood panels. In another innovative solution, decorative panels can be imprinted with customized patterns, art motifs or photographs.



Push/pull drive

For maximum loads up to 2000kg
Per mobile unit



Crank driven

For maximum loads up to 5000kg
per unit. Driven by floor chair or
friction drive



Electric drive

For loads over 5000kg per unit



FOREG
Mobile and fixed shelving system



FOREG
Mobile and fixed shelving system



FOREG
Digital printed end panel



Pull-out picture panel



Combiflex signage systems by FORSTER are extremely versatile solutions that will emphasize your company's corporate identity. Drawing upon decades of experience in signage projects, as well as the competence to manufacture products using a multitude of materials and state-of-the-art treatments.

FORSTER ensures straightforward handling and timeless design.

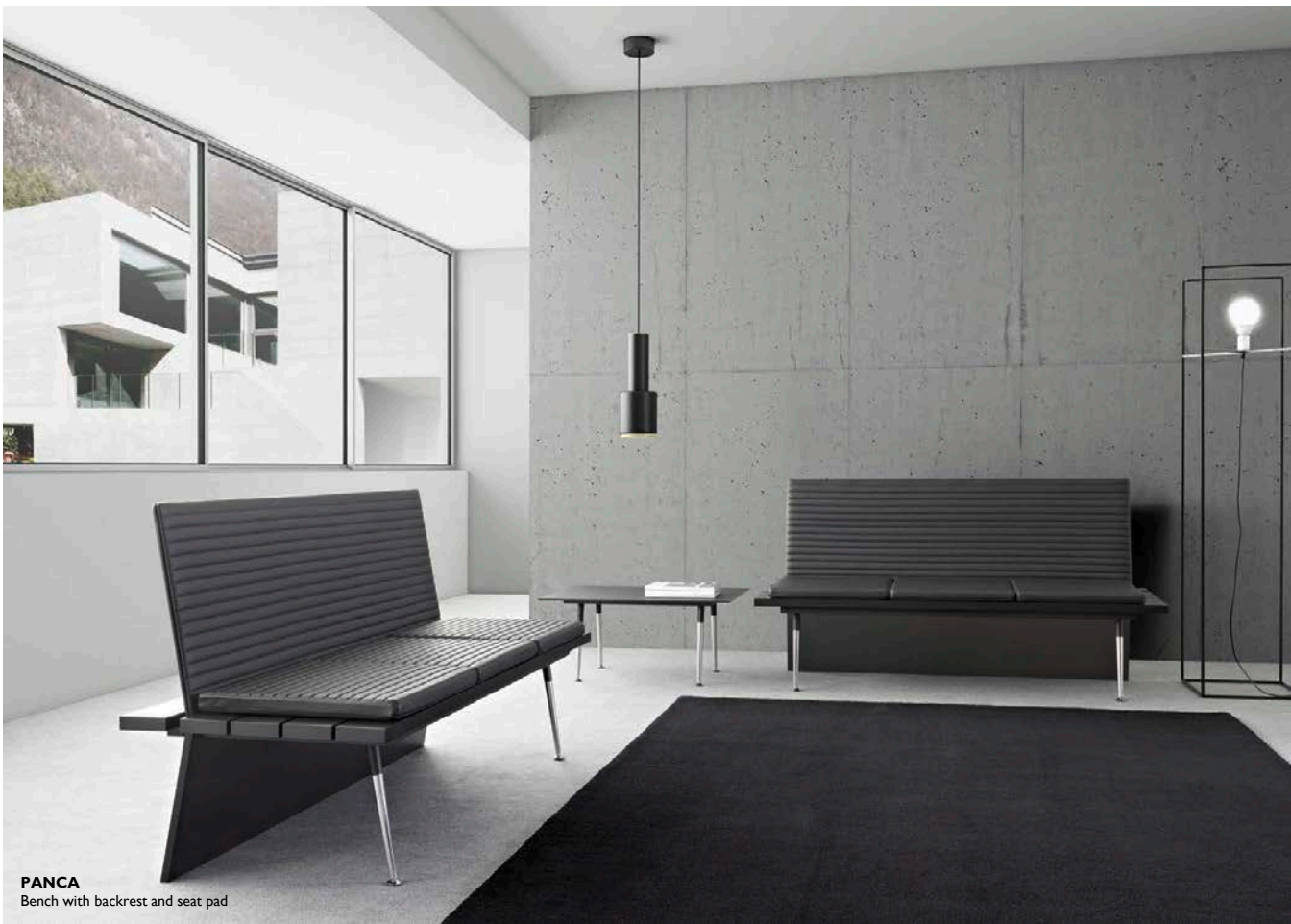


Looking at the future!

It's much more than a phrase. It's an attitude installed within company walls and that is reflected in almost everything we do, develop, manufacture, promote and distribute.

Looking at the future will provide us with the will and desire to improve efficiency of company performance. The future is never written and it's up to us to help create it.

In the future we will be looking for you!



PANCA
Bench with backrest and seat pad

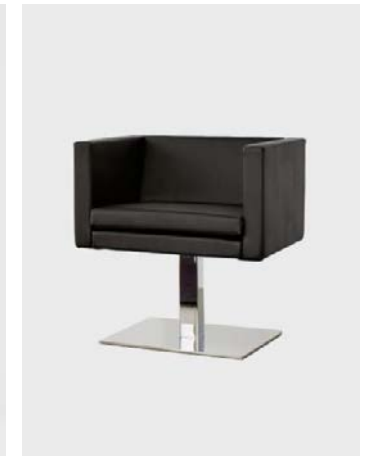
NINA
Stackable chair in polyamide shell



BASILISSA
Stackable chair in beech wood shell



STYLE
Upholstered armchair with square base



BASILISSA
Stackable chair in wood shell



BLACK TIE
Square top lacquered coffee table



BIZANCIO
Curved plywood stool



L SYSTEM
6-man bench-type workstation



MAREA
Sofa with foldable back and armrest



L SYSTEM
LEV panel legs with D/Line Cupboard



IN MOTION
Modular type sofa

The Marciana library in Venice, was created by Cardinal Bessarione, who in 1468 has donated the necessary funds to its construction and the purchase of the first books. This would turn later in to one of the first public library in the world.

Today, Marciana has more than one million books, including 13,000 manuscripts.

Marciana is a new shelving system for libraries. A product that uses mostly metal as a constructive material and that offers installations a technical and minimalist touch that will last for many years.



Office and Company takes care of working people. The furniture series are suitable for every requirement in relation to functionality, efficiency, technology and aesthetics. Office and Company products have obtained Catas institute certification for their performance and safety aspects with respect to European regulations.

Our products are produced from recyclable materials. Our components include class E1 items in conformity to the EN space 120/92 rules pertaining to the degree of formaldehyde content.



CAPITAL
Desk, Meeting Table and Console Table



REX EVOLUTION
Desk with side credenza



A4
Workstation and storage units



CAPITAL
Desk, Console and Mid-height Cabinet



REX MEETING
Meeting table



DIPLOMAT
Desk with side credenza



HELLO
Reception Desk



SENATOR
Executive Desk



REX 4 LEGS
Desk and side credenza



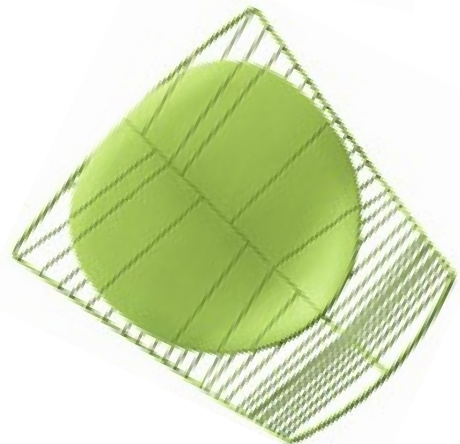
REX CLASSIC
Office desk

Arper is an Italian company producing and distributing office, home and contract sector furniture worldwide.

Although Arper products resemble spontaneous creations obtained without any apparent effort, they are all the result of rigorous mix of technology, costs, material, function, use and taste.

Environmental quality and sustainability together with the use of low-emitting recyclable materials are the cornerstones of Arper's production policy.

Arper collections are distributed via international sales network and displayed in single-brand showrooms situated in strategic cities worldwide: Milan, Cologne, New York, Stockholm, London, Amsterdam, Oslo, Copenhagen and Dubai.



SAYA
Curved plywood chair



NUUR and SAARI
Rectangular laminated table top and chair

SEAN
3-seater sofa with painted wooden base



CATIFA 70
Lounge chair and footstool



BABAR
Soft polyurethane seat stool



CATIFA 80
Lounge chair



DUNA
Trestle swivel base armchair



LOOP, DIZZIE and PIX
Modular seating, tables and pouf in various sizes



NUUR and SAARI
Rectangular laminated table top and tub armchairs with swivel trestle base

Boss Design Group is the UK's leading contract seating manufacturer with a large portfolio suited to soft furnishings, task seating, and meeting and conference. Investing in future designs has resulted in the launch of Soft Office which shows our understanding of how companies are starting to work in the office environment. Boss Design Group are able to offer local manufacturing in Dubai which further facilitates shorter lead times and cost effectiveness within the market place.



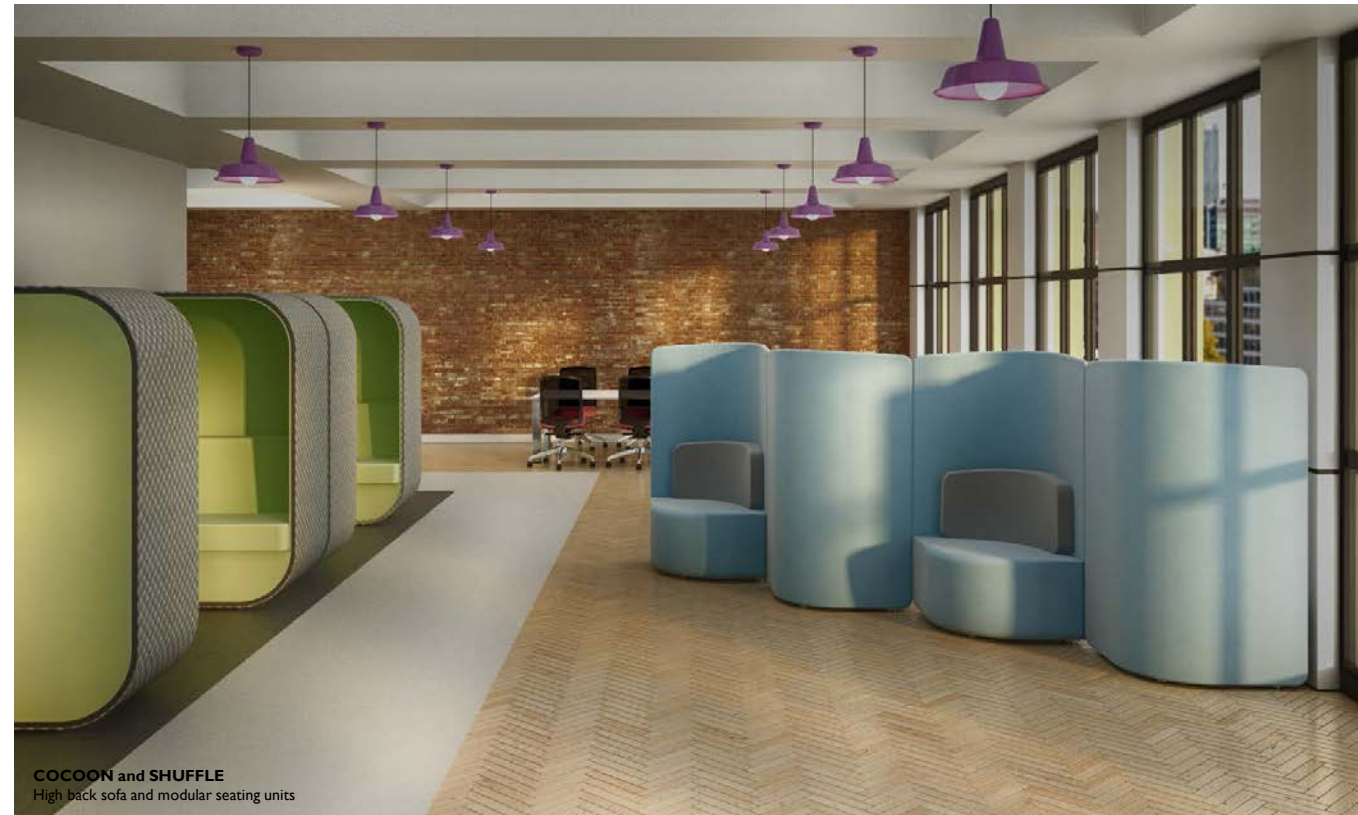
VERNON
Sofa, fabric upholstered with integral beech legs



AXIS, KRUZE, ROTA
Coffee tables



CEGA
Lounge chair, upholstered tubular unit



COCOON and SHUFFLE
High back sofa and modular seating units

KRUZE
Upholstered chair with show-wood outer shell



KARA
Low back chair with fixed arms



VITE
Mesh back task chair



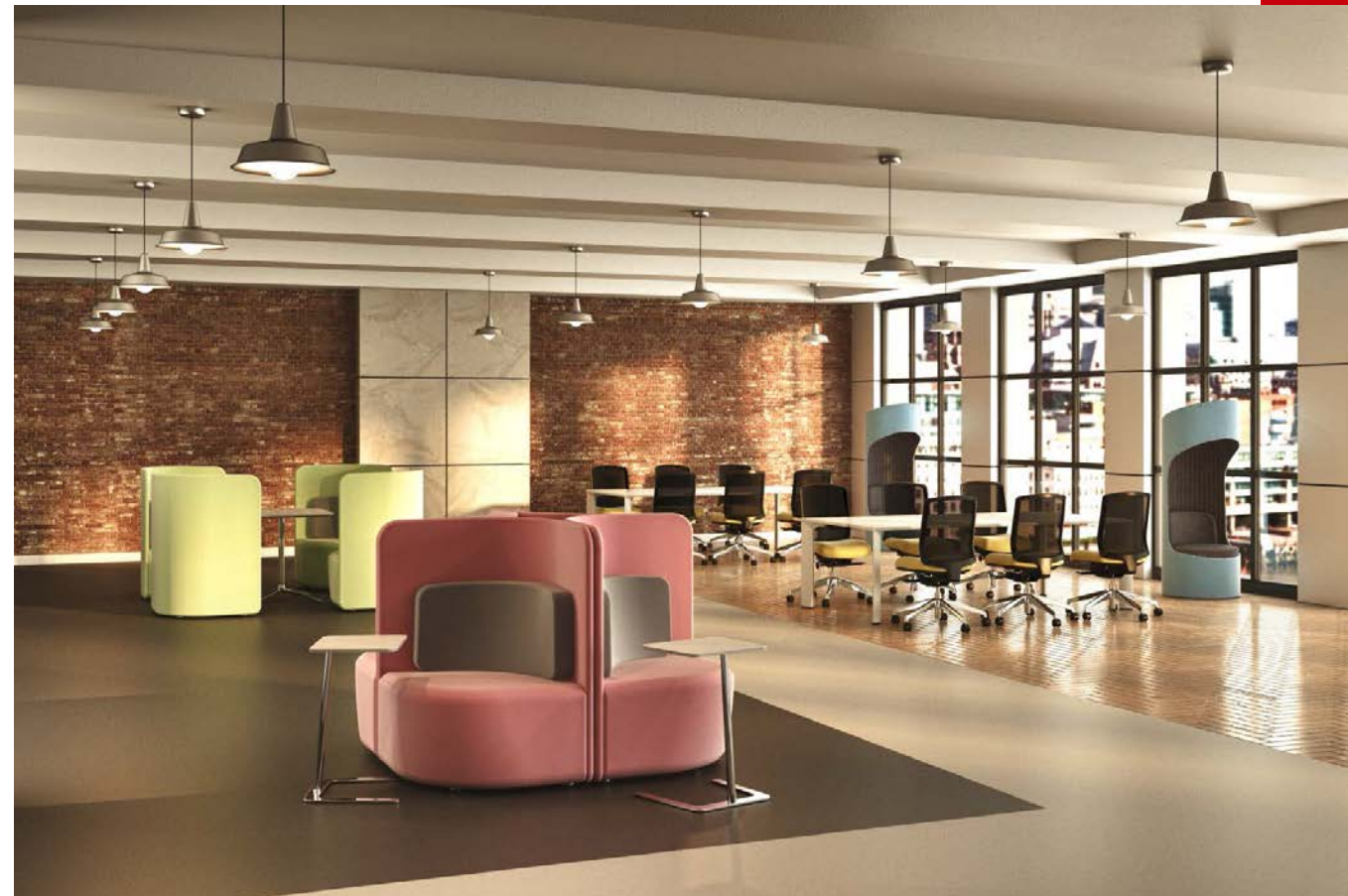
LAYLA
3-seater sofa with chromed base



JAC
Fabric upholstered armchair



VISTA
Office pod



SHUFFLE, CEGA and VITE
Mid back sofa, lounge chair and task/meeting chair

LAMMHULTS

Lammhults develops and markets modern furniture of international design for companies with high demands on quality and design.

We cooperate with some of the leading contemporary furniture designers. What we accomplish together shall be elegant, effective and eco-friendly.

Lammhults is part of Lammhults Design Group.



AREA
Tub chairs and modular sofa in high & mid back



ARCHAL
Armchairs

LAMMHULTS

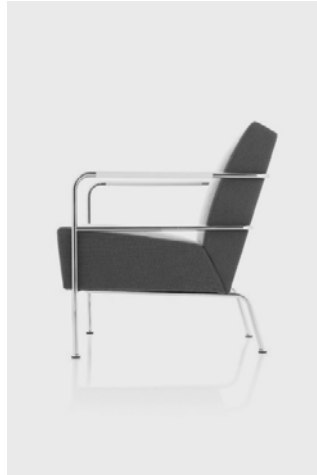
RIO
Multi-use chair



CHICAGO
Easy chair



CLUB
Swivel base chair with writing tablet



CINEMA
Easy chair



COMET
Lounge chair



GRADE
Multi-use chair



FUNK
Occasional tables



CAMPUS and CAMPUS AIR
Rectangular tables and chairs

Viccarbe collection shows the value and references for contemporary style, with a wide range of products for comfortable living.

It is distinguished by innovative elegance and global brand awareness.

Thanks to its natural integration into different surroundings, the Viccarbe collection is ideal for people who live in the present and think of the future.



COLUBI
Lounge Chair



BERRY
Modular Sofa



MASS and ASPA
Modular sofa and coffee table



SHAPE
Stool and coffee table in high Gloss lacquer

HOLIDAY
Upholstered seat and back with chrome frame



LAYER
Upholstered seat and back with chrome frame



LEG_IN
6-man Workstation with front screen & under desk storage



ACE
Upholstered lounge chairs with chrome frame



DAVOS
Upholstered benches



RI
Low back chair



WRAPP
Medium Back Chair



LAST MINUTE
Upholstered Barstool

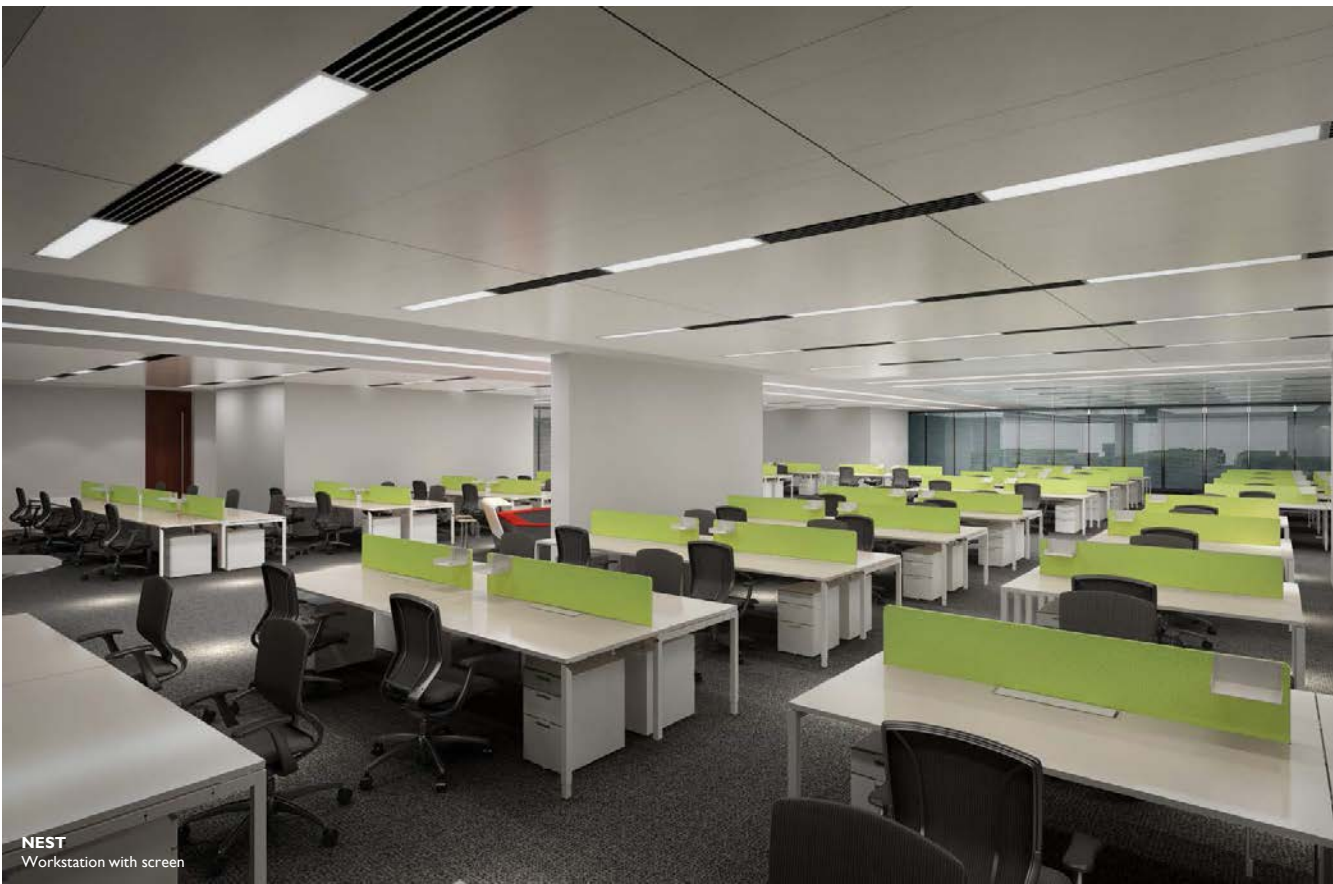
Artland is one of the leading office furniture suppliers in China with more than 20 years history.

Our system furniture is developed to achieve a balance between efficiency and space, function and economy, aesthetics and benefit.

From private office to open landscape, from reception to meeting area, our products can build an overall quality sense for the general environment in consideration of functionality, ergonomics, aesthetics and sustainable development.



NEST
Workstation with dividing panels



NEST
Workstation with screen



NET
Workstation and storage

POSH Office Systems (HK) Ltd. is a Herman Miller owned company. Posh is a distinguished specialist in designing, manufacturing and marketing office furniture solutions for its clients all over the world. Known for its strong brand image of "Better Design, Better Environment", POSH has received numerous awards and recognitions with its remarkable products and achievements in corporate citizenship.



EN6
Workstation with raised panels



EN6
Work Cubicle



SL8
Work bench with graphic pattern



SLH, EN6 and CK8
Workbench with panel systems and storage

We never compromise our commitment towards providing quality furniture to our clients, from designing to manufacturing.

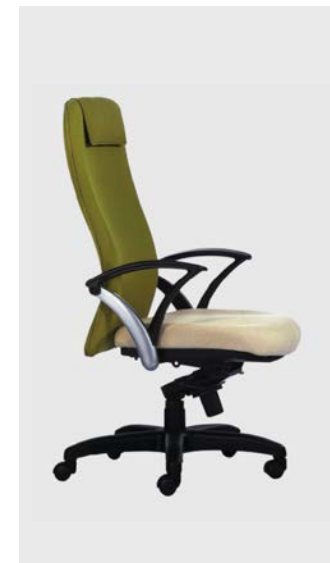
For greater production efficiency, specialized machines and equipment have been acquired. Quality control is stringent and methodically carried out at every stage of production. A significant portion of the manufacturing process is undertaken internally. Not only does this enable us to respond quickly to customer's requirements, but it also allows us to control the quality of the products we deliver.

Our system furniture includes a wide array of accessories and sizes which will maximize the productivity in today's demanding office workplace.

JARING
Mesh back task chair



IMAGE I
Task chair with headrest



DELPHI
Upholstered task chair



FULKRUM
Mesh back task chair



SONIC and DELPHI
Boat-shape meeting table with matte white legs and medium back chair



PLIS
6-man workstation in straight module configuration with mobile pedestal

Mizzanos started its corporate mission in 2005 in a rather humble beginning. Since its inception, the Company has gone through substantial transformation and now Mizzanos is ranked as one of the leading office furniture manufacturers in Asia.

The Company reaped the fruits of our R&D efforts and were able to organize the requisite resources of people skills, manufacturing knowledge and marketing strategy for its very own advent into direct manufacturing. Mizzanos has achieved a position of leadership and recognition for the quality provided in the global office furniture industry.



WYE
Executive, Task and Visitor's Chair

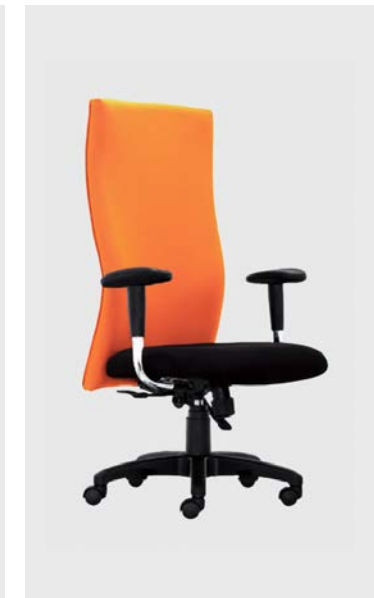
DANTE
Mesh back task chair



RAZO
Fully upholstered executive chair with chrome base



KATANA
Mesh back task chair



SLIMO II
Task chair with upholstered seat and back



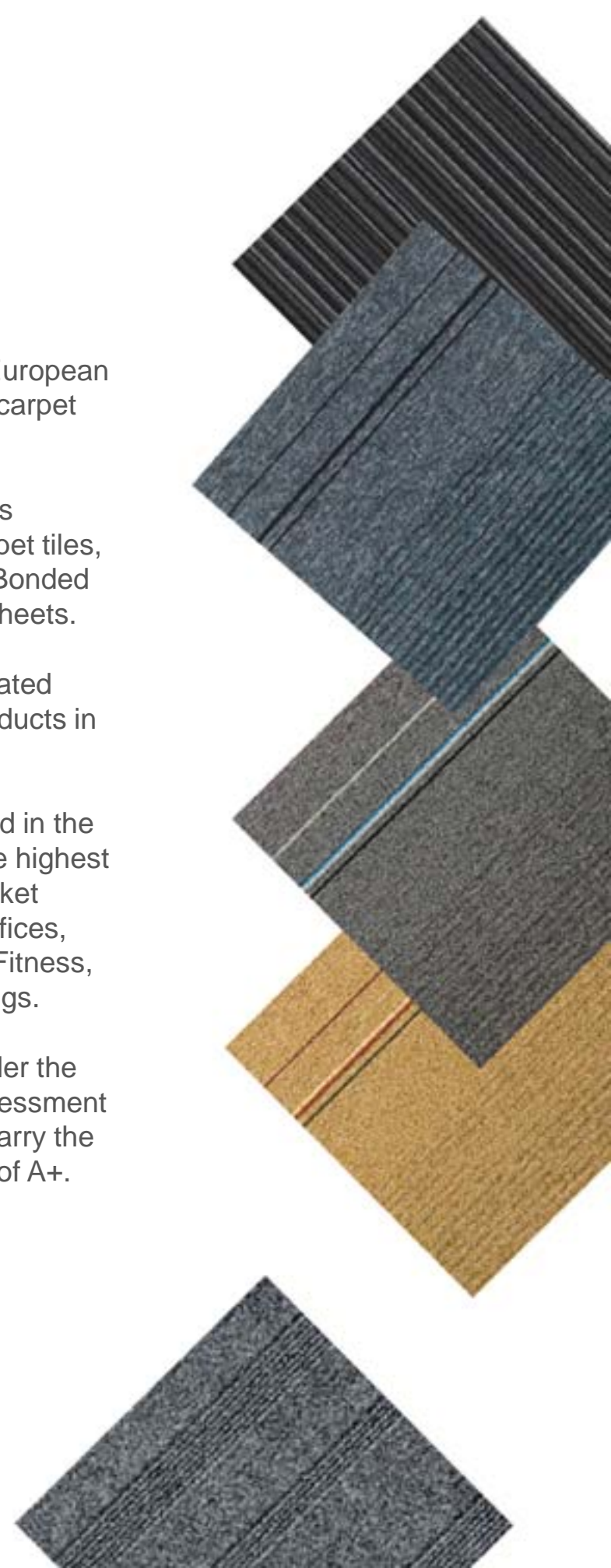
Burmatex (UK) is a leading European manufacturer of commercial carpet tiles.

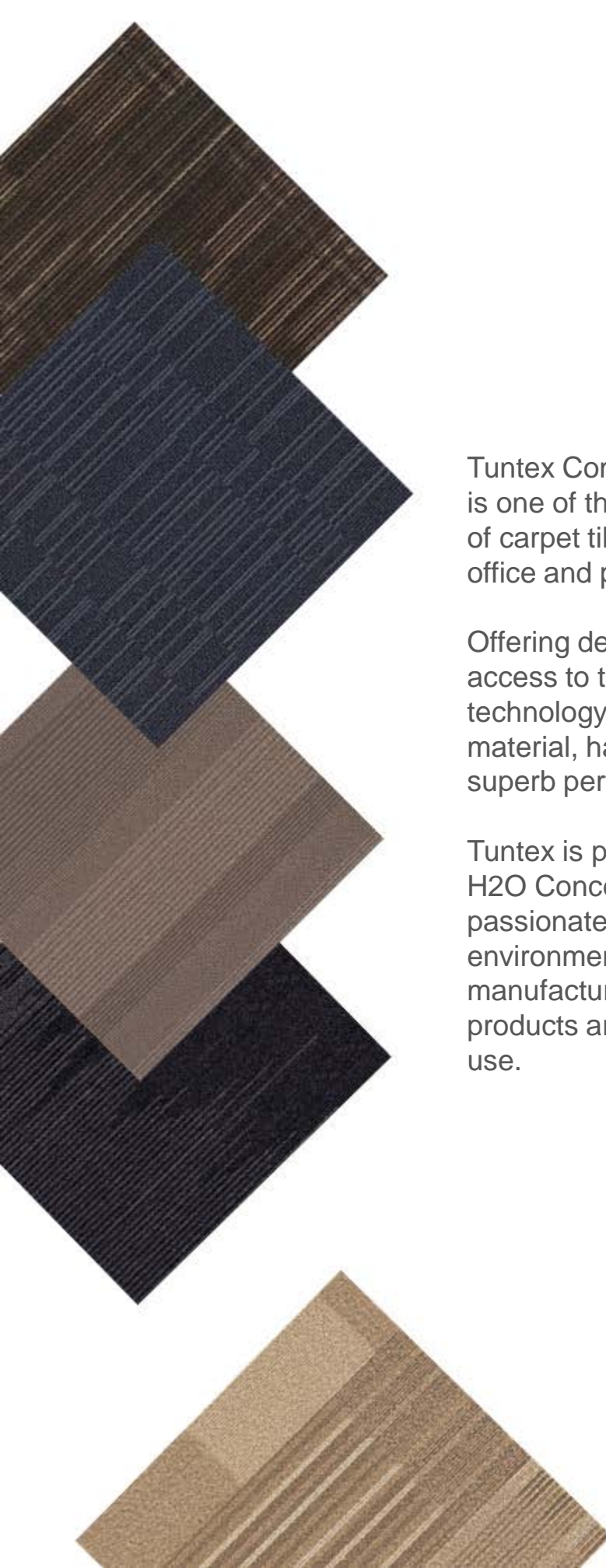
The program offering includes diverse products: Tufted carpet tiles, vibrantly coloured Structure Bonded tiles, fibre-bonded tiles and sheets.

Burmatex also offers a dedicated range of entrance barrier products in tile and sheet.

All products are manufactured in the UK in full compliance with the highest technical specifications. Market sectors include; Corporate offices, Financial, Leisure, Health & Fitness, Education, and Public buildings.

All products are rated A+ under the BREEAM environmental Assessment System, are PVC free, and carry the lowest VOC Emission rating of A+.





Tuntex Commercial Carpet Tiles is one of the fastest growing brands of carpet tiles for the commercial office and public building sectors.

Offering designers and end-users access to the latest design concepts, technology features and high quality material, has enabled us to deliver superb performance and aesthetics.

Tuntex is pleased to partner with H2O Concepts as both are passionate in supporting environmentally friendly products and manufacturing processes. All Tuntex products are fully recyclable after use.



BRANDS & ACCREDITATIONS

| | | |
|---|---|---|
|  |  | GREENGUARD • LEED • BM TRADA • BIFMA • FCS • CRADLE TO CRADLE • ISO 14001 |
|  |  | BM TRADA • ISO 9001 • ISO 14001 |
|  |  | ISO 9001 • OHSAS 18001 • OHSAS 14001 |
|  |  | ISO 9001 • ISO 14001 • ISO 14025 |
|  |  | ISO 9001 • ISO 14001 |
|  |  | ISO 9001 • OSHAS 18000 |
|  |  | ISO 9001 • UNI EN ISO 9001 |
|  |  | ISO 9001 • ISO 14001 • OHSAS 18001 |
|  |  | ISO 14001 • ISO 9001 • OHSAS 18001 |
|  |  | ISO 14001 |
|  |  | ISO 14001 • ISO 9001 |
|  |  | FSC • LEED • BIFMA |
|  |  | ISO 14001 • LEED |
|  |  | ISO 14001 • LEED • SCS • GECA • BIFMA |
|  |  | ISO 9001 • GREENGUARD |
|  |  | |
|  |  | BREEAM |
|  |  | LEED • CRI • ISO 14001 • ISO 9001 |

LIST OF PROJECTS

ABU DHABI

CH2M HILL OFFICE
CROWN PRINCE COURT
ADIA
ETISALAT
GLOBAL AEROSPACE LOGISTICS
AL HOSN GAS
KHARAFI HQ
ZAYED UNIVERSITY HQ
ENVIRONMENT AGENCY
ABB
MUBADALA AEROSPACE
ABU DHABI SECURITIES (ADS)
ABU DHABI NATIONAL INSURANCE COMPANY
SCADA – ABU DHABI MUNICIPALITY
ABU DHABI COMMERCIAL BANK (ADCB)
NATIONAL DRILLING COMPANY (NDC)
GENERAL ELECTRICS (GE)
WHITE & CASE HQ
TORISHIMA
OILSERV
PETRONAS
AL AIN MUNICIPALITY
WESTERN REGION MUNICIPALITY
ADEC – MUSANADA
DOLPHIN ENERGY
ERNST & YOUNG
NATIONAL QUALIFICATION AUTHORITY (NQA)
ABU DHABI MUNICIPALITIES
AL NASSER HQ
AMBULATORY HEALTH CARE CLINIC – SEHA
REED SMITH
GASCO
POLICE JAIL

DUBAI

THE PRIME MINISTER'S OFFICE
HABIB BANK AG ZURICH HQ
DU
PEPSI COLA
THE MINISTRY OF HEALTH
UTC CARRIER
DUBAI CIVIL AVIATION
SCHLUMBERGER
MAJID AL FUTTAIM OFFICE TOWER

OMAN

MAJLIS OMAN – ROYAL COURT AFFAIRS
AL MASSARA HOSPITAL
NAWRAS TELECOM
DIWAN OF ROYAL COURT – ROYAL ESTATE
BANK NIZWA
OMAN ARAB BANK

IRAQ

PETRONAS